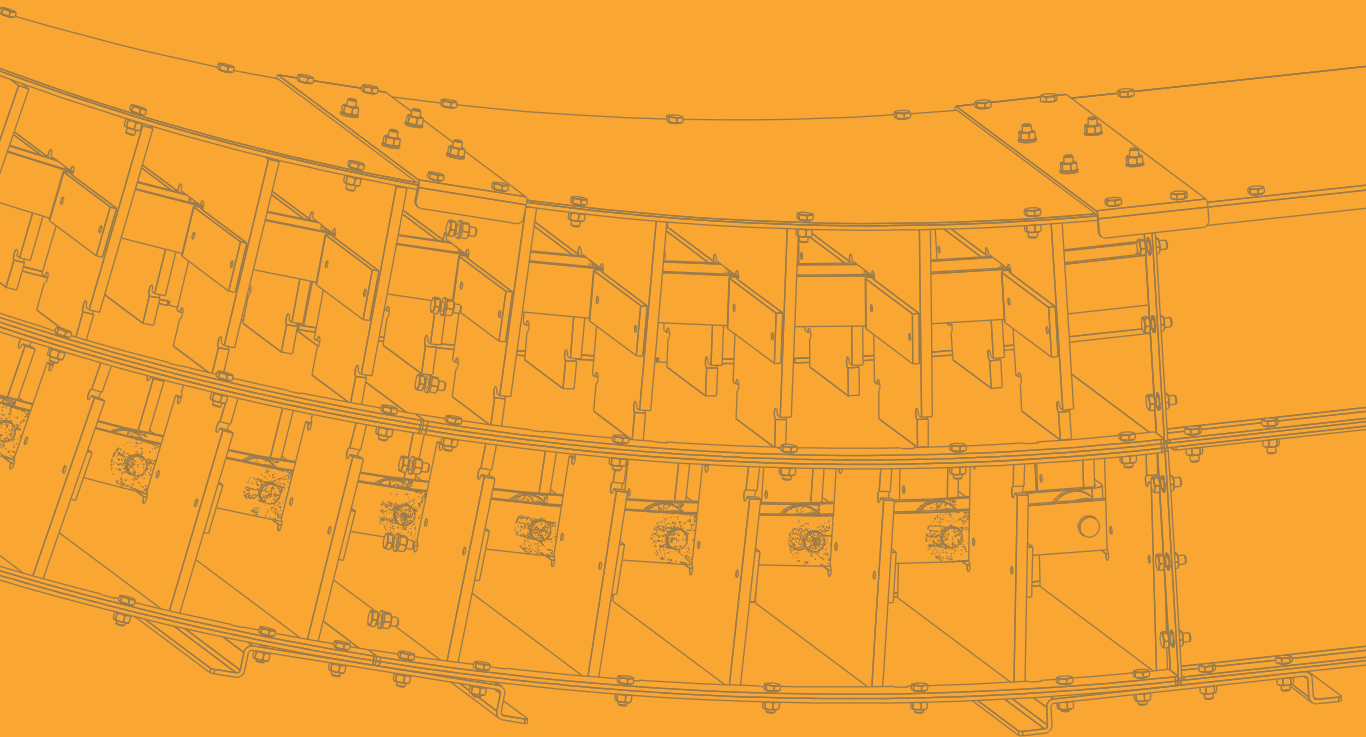


# TCK SERIES Trench chain conveyor

---



**METALMONT**

HANDLING INNOVATION

# TCK SERIES TRENCH CHAIN CONVEYOR

Reliable performance, construction quality,  
easy assembly: the perfect solution

Ideal for handling cereals, oilseeds, pulses and non-free flowing products, such as soybean meal, the Metalmont TCK series trench conveyors move bulk agricultural products through initially horizontal paths that become inclined up to a slope of 45 °. This type of conveyors make possible to avoid the construction of expensive excavation civil works, since it can be installed above ground and, thanks to the inclined part, can directly load an elevator or other machines. Metalmont TCK series conveyors are designed to guarantee the best performance even in the most difficult working conditions, with minimum maintenance costs and total operating costs.

**RANGE** from 60 to 200 t/h - different flow rates available on request

Available also in the ATEX 22 version according to the classification of the Zone made by the customer

**AVAILABLE VERSIONS**

- normal single inclination upward
- for pit intake with inlet of the product by side
- double inclination, upward then horizontal

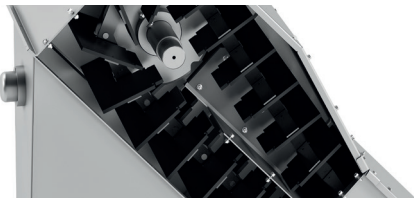


---

In order to improve the product and for regulatory compliance, the technical specifications, appearance and equipment described in this document may be subject to change without prior notice.

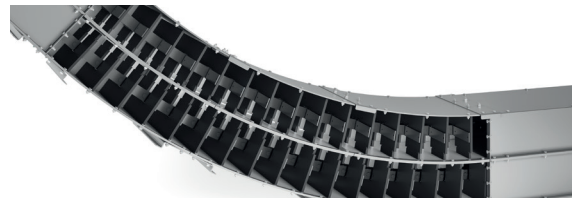
### 1 HEAD

- Helical bevel gearmotor with protective cover
- Anti-clogging sensor in the unloading hopper
- Inspection window
- Toothed driving wheel
- High resistance steel driving shaft
- Self-aligning ball bearings shielded and lubricated with high-performing grease
- Special shape according to the paddles of the chain



### 2 SCRAPER CHAIN

- Special steel folded links scraping chain complete with hardened steel bushings and pins
- Special scraping paddles made in HDPE for handling the material up to 45° slope

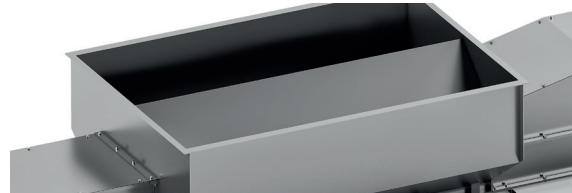


### 3 ANGULAR IDLER ELEMENT

- Special corner element for a 15° deviation, composable in a set of max. 3 elements, so to reach the 45° max slope
- Equipped with sliding blocks made of HDPE polyethylene

### 4 PIT INTAKE

- Suitable for loading material coming from a pit



### 5 LOADING HOPPER

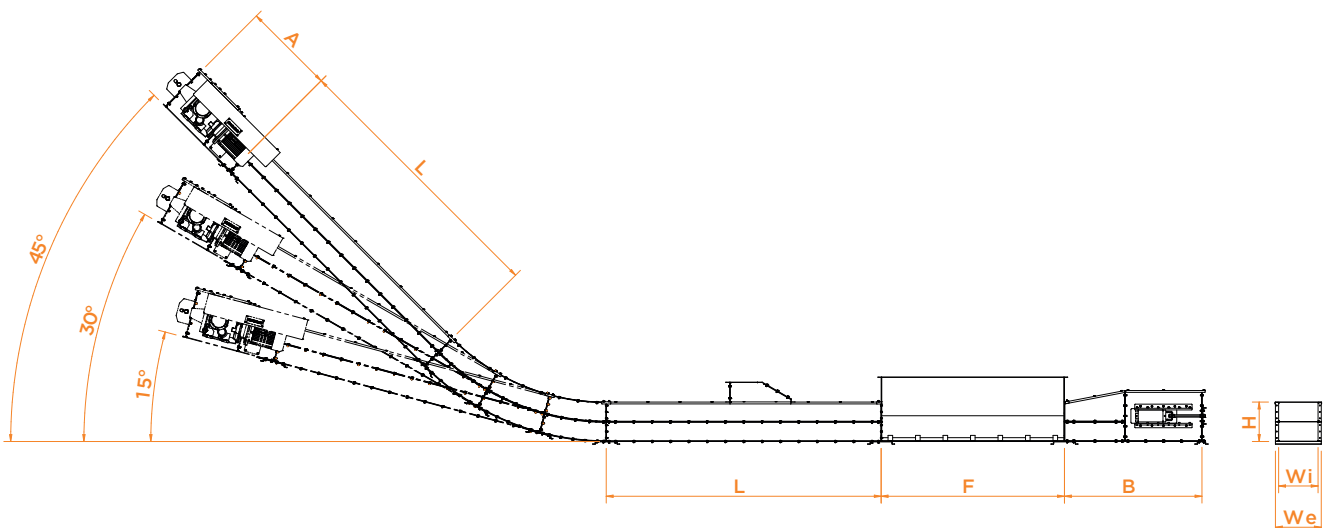
- Suitable for loading material coming from other machines

### 6 IDLER ELEMENT

- Smooth idler wheel
- High resistance steel idler shaft
- Double screw chain tensioner
- Tensioning slide
- Supports with self-aligning ball bearings shielded and lubricated with high-performing grease
- Special shape according to the paddles of the chain

MODEL	U.M.	TCK-060	TCK-120	TCK-200
Flow rate*	t/h	60	120	200
Chain speed	m/s	0,6	0,6	0,6
Chain pitch	mm	125	125	150
A	Driving element length (head)	1.000	1.000	1.500
B	Idler element length (tail end)	1.500	1.500	2.000
H	Case height	430	430	630
We	Case external width	310	500	570
Wi	Case internal width	240	430	500
	Side thickness	3	3	4
	Bottom thickness	3	4	4
	Cover thickness	1,5	2	3
L	Intermediate element length		500/1.000/2.000/3.000	
F	PIT element length		500/1.000/2.000/3.000	
	15° corner elements		1/2/3	

\*Flow rate referred to s.w. wheat 0.78 t/m<sup>3</sup>; RH 15%; impurities: 2%



In order to improve the product and for regulatory compliance, the technical specifications, appearance and equipment described in this document may be subject to change without prior notice.

# ACCESSORIES AND DEVICES

Standard and Optional

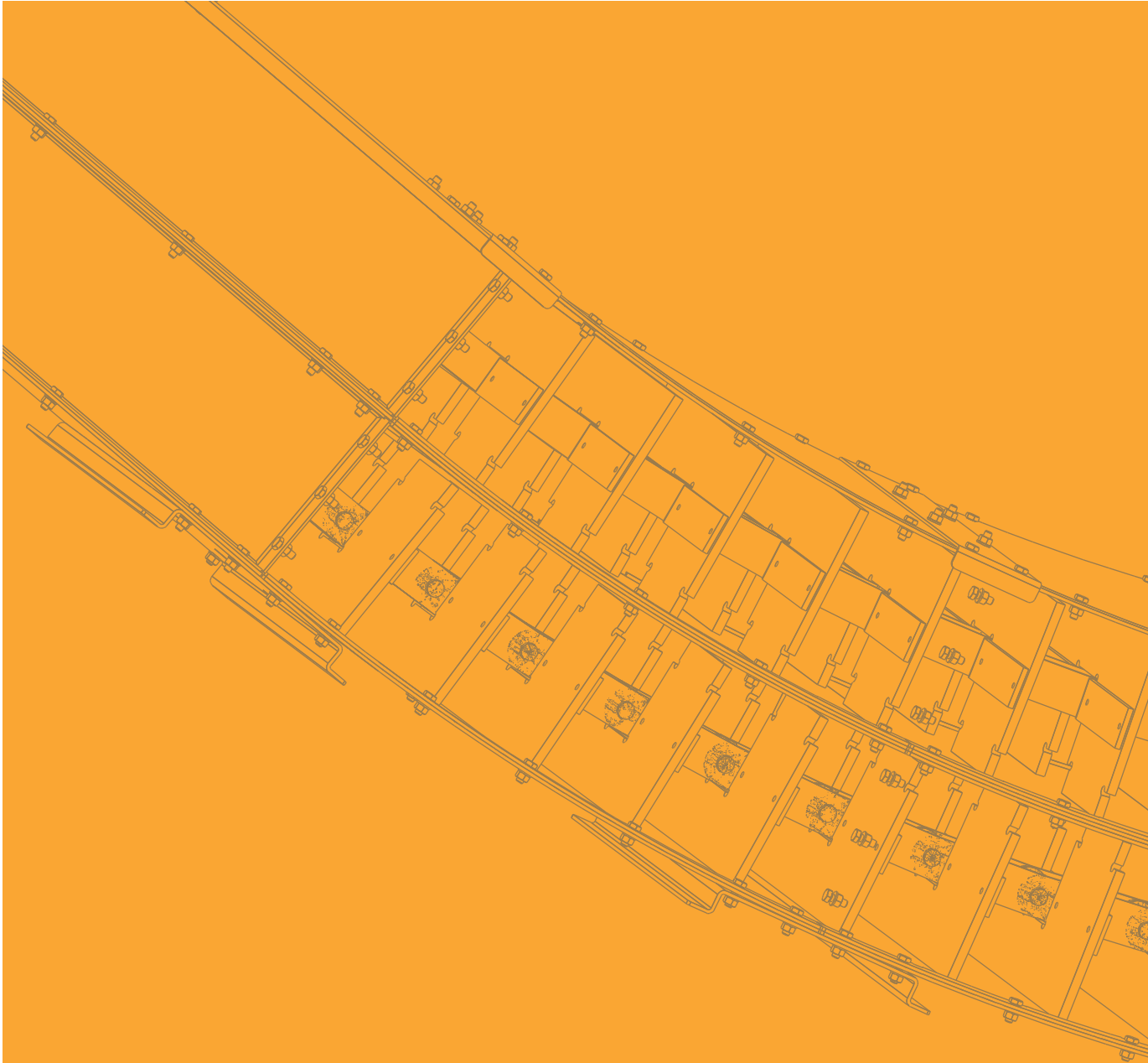
MODEL	TCK-060	TCK-120	TCK-200
Anti-clogging sensor on the head	●	●	●
Speed control sensor on tail end	●	●	●
Porthole for visual inspection on the head	●	●	●
HDPE sliding blocks	●	●	●
Hardox sliding blocks	○	○	○
Hot-dip galvanising of the intermediate elements	○ <sup>1</sup>	○ <sup>1</sup>	○ <sup>1</sup>
Hot-dip galvanising of head and tail end	○ <sup>2</sup>	○ <sup>2</sup>	○ <sup>2</sup>
Temperature bearings sensor on head and tail end	○	○	○
Painted version	○	○	○
Stainless steel version	○	○	○
Servo-ventilated motor when running on frequency inverter	○	○	○
Suitable for use in ATEX 22, according to the classification of the Zone made by the customer	○	○	○
Extensions and supports of several sizes	○	○	○
Shutters for product discharge. Manual, motorised or pneumatic drive	○	○	○

● Standard

○ Opzionale

○<sup>1</sup> Standard surface finish: pre-galvanised sheet steel Z275.

○<sup>2</sup> Standard surface finish of head and tail end: hot-dip galvanised tensioning block and sides. Bottom and cover in pre-galvanised sheet steel Z275.



**METALMONT**  
HANDLING INNOVATION

Metalmont s.r.l.  
Via Guglielmo Marconi, 92  
31020 Revine Lago (TV) Italy  
☎ +39 0438 562028  
✉ info@metalmont.it

**METALMONT.IT**

Rev.00