

CA SERIES Open screw



METALMONT

HANDLING INNOVATION

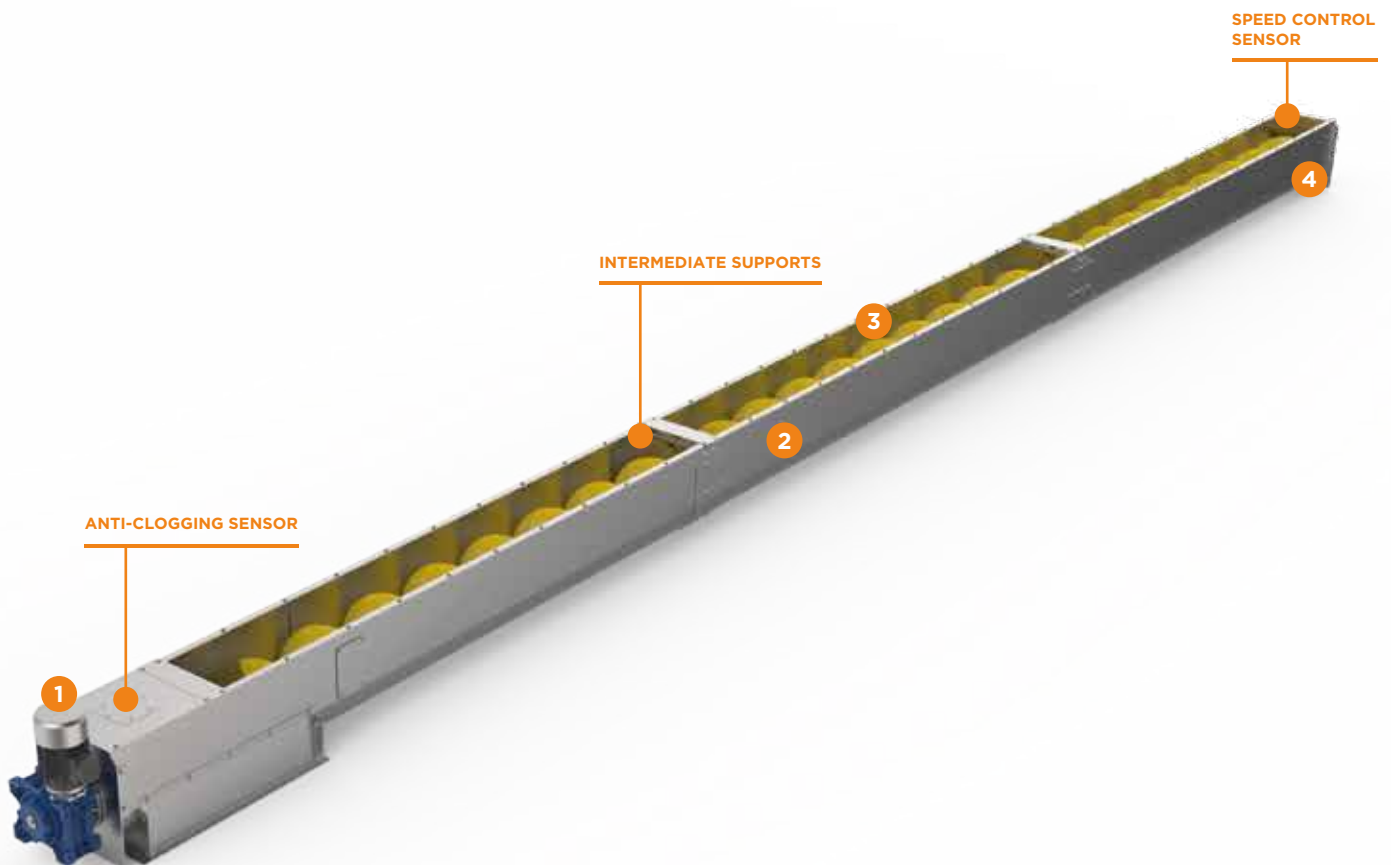
CA SERIES OPEN SCREW

Reliable performance, construction quality,
easy assembly: the perfect solution

Ideal for handling oilseed cereals and legumes on horizontal paths, even with moderate slopes, the Metalmont screws stand out for their construction quality.

Designed and built to minimise maintenance and operating costs.

RANGE from 40 to 100 t/h - higher flow rates available on request



1 HEAD

- Equipped with motor and gearmotor
- Equipped with inspection porthole
- Supports with ball bearings lubricated and greased with high-performing grease
- Possibility to install speed control and anti-clogging device
- Protective guard for the motor

3 COIL

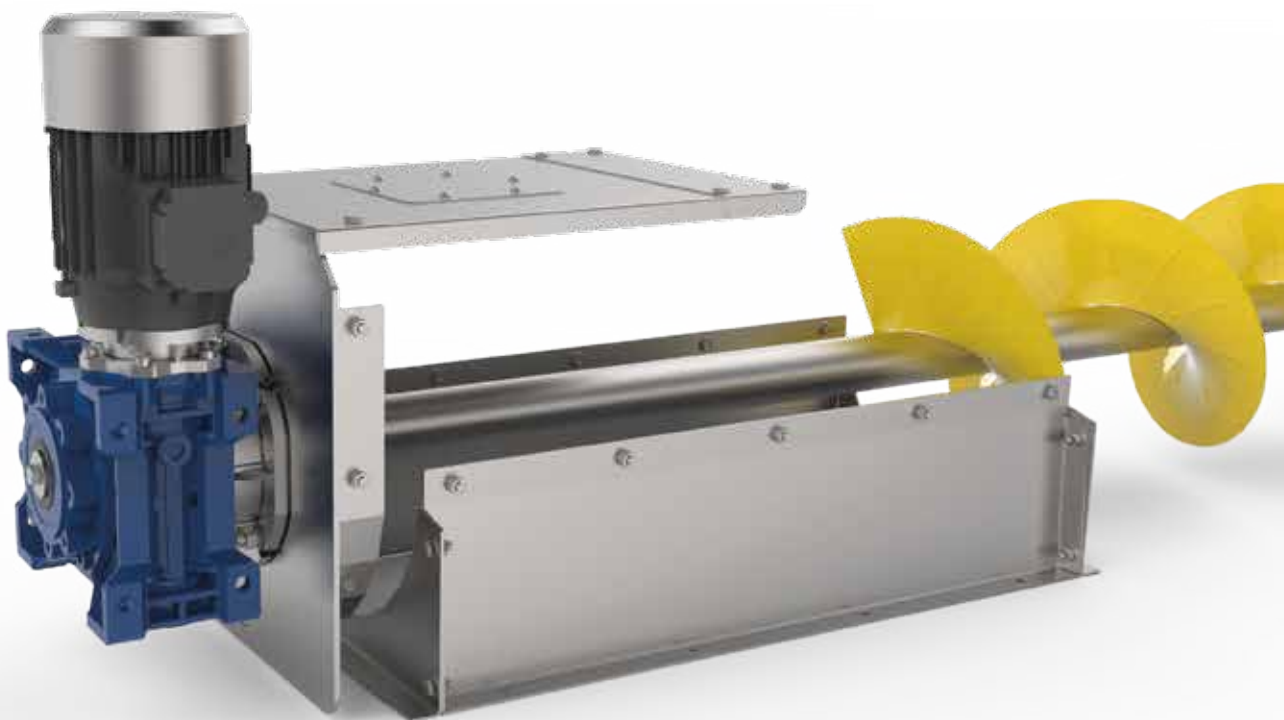
- Variable thickness propeller, spot welded
- High-resistance and low friction plastic intermediate supports

2 STRUCTURE

- Shaped around the coil so as to reduce material residues inside

4 TAIL END

- Supports with ball bearing lubricated and greased with high-performing grease



DATA SHEET

MODEL	U.M.	CA-040	CA-060	CA-100
Flow rate*	t/h	40	60	100
Coil rotation speed	rpm	187	187	187
Coil diameter	mm	200	250	300
Coil pitch	mm	200	250	300
Head length	mm	2.000 / 3.000	2.000 / 3.000	2.000 / 3.000
Tail end length	mm	2.000 / 3.000	2.000 / 3.000	2.000 / 3.000
Case height	mm	290	365	445
Case external width	mm	295	375	445
Case internal width	mm	220	280	330
Intermediate element length	mm	2.000 / 3.000	2.000 / 3.000	2.000 / 3.000
Case thickness	mm	2,0	2,0	2,5
Cover thickness	mm	1,5	1,5	1,5

*Flow rate referred to p.s. wheat 0.78 t/m³; RH 15%; impurities: 2%

ACCESSORIES AND DEVICES

MODEL	CA-040	CA-060	CA-100
Anti-clogging sensor	○	○	○
Inspection porthole	●	●	●
Speed contro	●	●	●
Suitable for use in ATEX 22, according to the customer classification	○	○	○

● - *Standard*

○ - *Optional*

In order to improve the product and for regulatory compliance, the technical specifications, appearance and equipment described in this document may be subject to change without prior notice.



METALMONT

HANDLING INNOVATION

Metalmont s.r.l.
Via Guglielmo Marconi, 92
31020 Revine Lago (TV) Italy
☎ +39 0438 562028
✉ info@metalmont.it

METALMONT.IT